

MONTHLY MEMBERSHIP PROGRESS REPORT

District 2 S2

Results as of: 4/30/2025

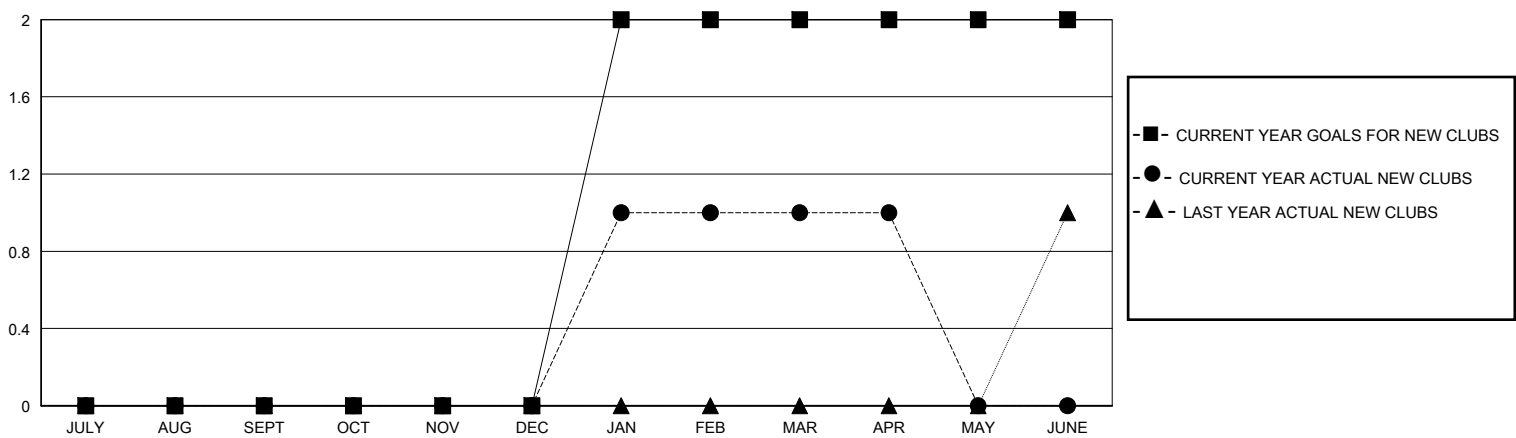
GMT:

LOCATION TEXAS

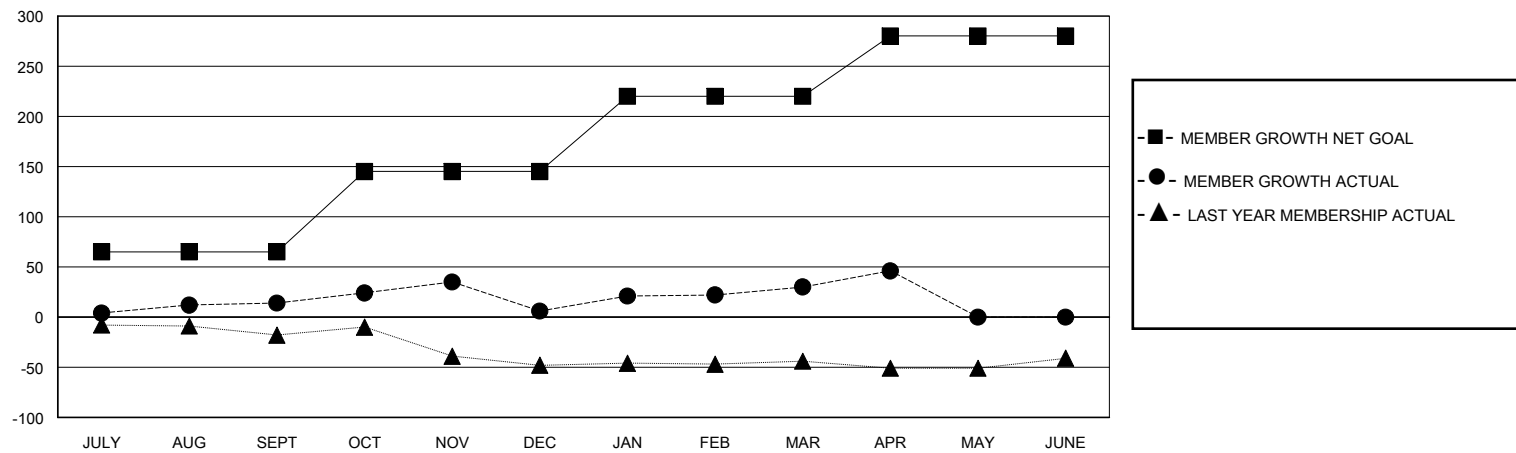
GMT CA

| Clubs | | | | Members | | | |
|-----------------------|---------------|-----------|---------------|-----------------------|------------------------|----------------------|--|
| RESULTS FOR 2024-2025 | | | | RESULTS FOR 2024-2025 | | | |
| QUARTER | NEW CLUB GOAL | NEW CLUBS | DROPPED CLUBS | QUARTER | MEMBER GROWTH NET GOAL | MEMBER GROWTH ACTUAL | DROPPED MEMBERS ACTUAL (including transfers) |
| JULY/AUG/SEPT | 0 | 0 | 1 | JULY/AUG/SEPT | 65 | 65 | 46 |
| OCT/NOV/DEC | 0 | 0 | 4 | OCT/NOV/DEC | 80 | 50 | 53 |
| JAN/FEB/MAR | 2 | 1 | 0 | JAN/FEB/MAR | 75 | 77 | 38 |
| APR/MAY/JUNE | 0 | 0 | 0 | APR/MAY/JUNE | 60 | 39 | 22 |

GOALS AND ACTUAL NEW CLUBS CUMULATIVE



GOALS AND ACTUAL MEMBERS CUMULATIVE



| | | | |
|------------------|---|---------------------------------|--------------|
| DROPPED CLUBS: 5 | 32 CLUBS OF 54 ADDED 1 OR MORE NEW MEMBERS | GENDER DISTRIBUTION | |
| | | MALE | 754 (51.05%) |
| | | FEMALE | 723 (48.95%) |
| DROPPED MEMBERS | CLICK HERE FOR CUMULATIVE MEMBERSHIP DATA | TOTAL FAMILY UNIT MEMBERS | |
| DECEASED | | 0 | |
| CLUB CANCELLED | | FAMILY MEMBERS PAYING HALF DUES | |
| OTHER | | 0 | |
| TOTAL | | | |
| | | | |